

## What are the common problem for Interior Walls ?



**Patchiness  
(Shadowing)**



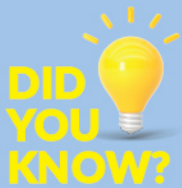
**Patchiness  
(Tiger Stripe)**



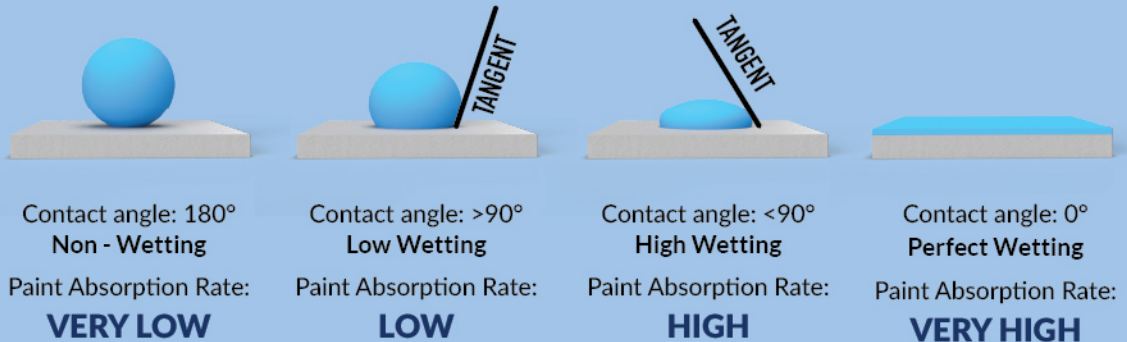
**Rough Surface  
Appearance**



**Spider Web  
Cracks**



Different absorption rates of paint on skim coat leads to various interior wall defects.



## How does uneven paint absorption rate occur ?



**Overly compressed  
skim coat**



**Improper mixing  
conditions**



**High moisture content  
on application**



**Incompatible  
skim coat & paint**

# One-Stop Anti-Patchiness Internal System:

## Compatible Interior System Solution from Bare to Finish



**SKIM COAT (BASE COAT):**  
CMI® Base Mortar 781 Grey  
CMI® BlockSkim 782 (For Block Walls)



**SKIM COAT (TOP COAT):**  
CMI® WallSkim 681 PLUS



**SEALER:**  
Nippon Paint Interior Wall Sealer



**TOPCOAT:**  
Nippon Paint Interior Topcoat



**Anti-patchiness Solution**  
Provides smooth & even finishing after application



**Compatible System**  
Excellent adhesion between skim coat and paint.



**Paint Transfer Performance**  
Excellent coverage to provide the hiding performance.

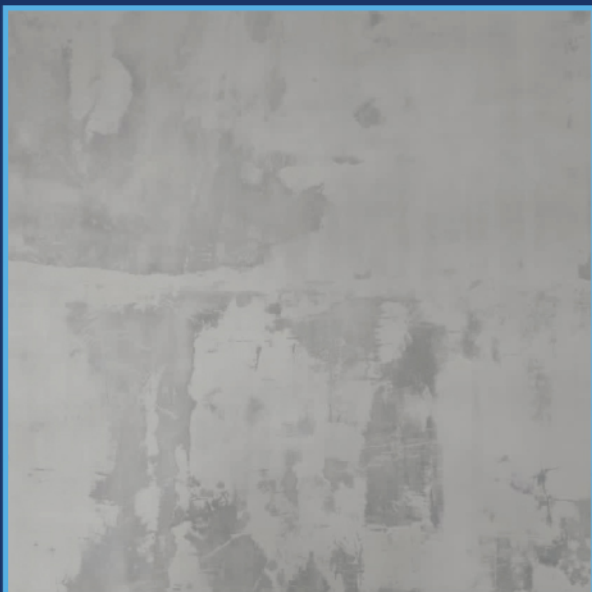


**Vibrant Finishing**  
Promotes richer colour appearance after paint application.

Notes: All preceding systems must adhere to the Anti-Patchiness Solutions provided by CMI®.

## How does the appearance differ?

### Conventional Interior Wall System (Skim Coat + Sealer + Topcoat)



Rough patches and uneven patches and marks on the surface.

### Nippon Paint Anti-Patchiness System



Smooth and even finishing without patchiness on the surface.