



**NIPPON
PAINT**

PROTECTIVE COATINGS

HEAVY DUTY COATINGS FOR INDUSTRIAL
(VER. 3)

Protect your
steel structures with
ASIA'S NO.1
PAINT BRAND

CONTENTS

CONVENTIONAL COATINGS

Alkyd Primers & Galvanised Steel Primer	Nippon Paint Red Oxide Primer Nippon Paint Zinc Phosphate Primer FD Nippon Paint PVB Tech Primer	pg03
Alkyd Finish	Nippon Paint Micaceous Iron Oxide (MIO) Nippon Paint Protective Finish FD	pg04
Specialty Coatings	Nippon Paint Aluminium Paint Nippon Paint Bituminous Solution	pg05
Telecommunication Tower Coatings	Nippon Paint Protective Acrylic Red Oxide Primer Nippon Paint Protective Acrylic Finish	pg06

HEAVY-DUTY COATINGS

Epoxy Zinc Primers	Nippon Paint NIOZ Nippon Paint Zinc Rich Primer HS Nippon Paint Nippe zinc E2 Primer	pg07
Galvanised Steel & Concrete Floor Primers	Nippon Paint Etching Primer 120 Nippon Paint Galvaprimer Nippon Paint Penetrative Epoxy Primer	pg08
Internal Tank Epoxy Coating	Nippon Paint EA9 Red Oxide Primer Nippon Paint EA9 Finish HB	pg09
Immersed Epoxy Coatings	Nippon Paint 9049 Nippon Paint 9049 GF Nippon Paint Arocoat	pg10
Universal Surface Tolerant Coating	Nippon Paint 8048 Zinc Phosphate Primer QD Nippon Paint 8048 Nippon Paint 8048 MIO	pg11
Express Surface Tolerant Coatings	Nippon Paint Epoxy Xpress Zinc Phosphate Primer Nippon Paint Epoxy Xpress Nippon Paint Epoxy Xpress MIO	pg12-13
Polyurethane Finishing	Nippon Paint Polyurethane Recoatable Finish Nippon Paint PUR Lite Finish	pg14
Epoxy Finish	Nippon Paint EA4 Finish Nippon Paint EA4 Finish (EP) Nippon Paint EA7 Finish	pg15-16

HEAT RESISTANCE COATINGS

Silicone & Silicone Acrylic Coatings	Nippon Paint 300 High Temperature Primer Nippon Paint 300 High Temperature Finish Nippon Paint 600 High Temperature Primer Nippon Paint 600 High Temperature Finish	pg17
---	--	------

CHEMICAL RESISTANCE COATINGS

Vinyl Ester Coating	Nippon Paint CORCHEM PRIME Nippon Paint CORCHEM VE	pg18
----------------------------	---	------

Project References	pg19-20
Recommended Coating Systems	pg21-26

ABOUT NIPPON PAINT MALAYSIA

At Nippon Paint, we pride ourselves as the coating experts, specialized in coatings for multi-surfaces and multi-segments and understand that every surface has its own unique characteristics and challenges. With that in mind and with Nippon Paint's spirit in providing the best value to our customers, we now include waterproofing to further enhance the essence of the Total Coating & Construction Solutions to our customers, providing correct and quality waterproof products to increase the durability and adequate protection for every buildings.

As the trusted brand for more than 50 years, we own a dedicated and proactive sales force and specification consultant team ready to attend to all your enquiries. Our professional technical consultants are ready for any technical assistance needed in pre, during and post waterproofing construction stages.

“ *Innovation is at its peak when it is harnessed for a singular aim – the smile on our customers' face,* ”

- Yaw Seng Heng, Group MD, Nippon Paint (M) Sdn Bhd -

NIPPON PAINT TOTAL COATING & CONSTRUCTION SOLUTIONS



ARCHITECTURAL COATINGS



PROTECTIVE COATINGS



WATERPROOFING SOLUTIONS



FLOORING SOLUTIONS



SEALANT, ADHESIVE & FILLER SOLUTIONS



DRY MIX SOLUTIONS

OUR PROFESSIONAL SERVICES



PROJECT SPECIFICATION CONSULTATION



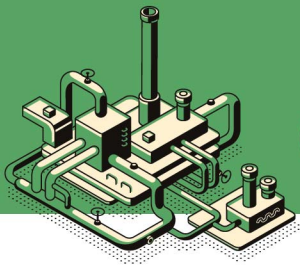
DETAIL DRAWINGS CONSULTATION



JOB-SITE TECHNICAL SUPPORTS



FORWARD COATINGS EXPO SEMINARS & TRAINING



CONVENTIONAL COATINGS

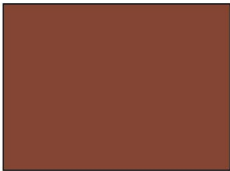


This category consists of single pack coatings that normally require simple surface preparation such as hand scrubbing with wire brush or mechanical power tool. It is specially formulated to provide protection against corrosion for surfaces under normal service condition exposed to an environment of light moisture condensation and presence of mild corrosive chemicals.

Nippon Paint Red Oxide Primer **Nippon Paint Zinc Phosphate Primer FD**

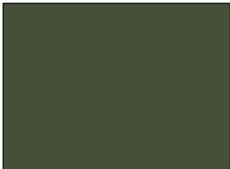
Alkyd-based fast drying rust inhibitive primer is designed for application on wire brushed/power tooled steel surfaces under non-immersion condition to prevent rust formation. It can be overcoated with most alkyd finishes and alkyd micaceous iron oxides such as Protective Finish FD and Micaceous Iron Oxide as intermediate and top coats. (Nippon Paint Zinc Phosphate Primer FD acts as a rust inhibiting primer.)

Nippon Paint Red Oxide Primer

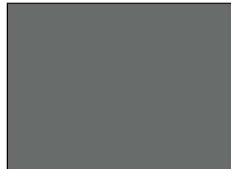


Reddish Brown

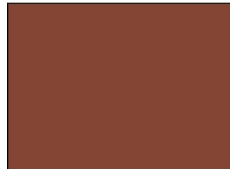
Nippon Paint Zinc Phosphate Primer FD



Grey Green



Light Grey



Reddish Brown

Nippon Paint PVB Tech Primer

Nippon Paint PVB Tech Primer is a single-pack modified polyvinyl butyral, acid-catalysed etching primer. It is a fast-drying primer with excellent adhesion, suitable for steel, galvanised steel and light alloys.



Nippon Paint Micaceous Iron Oxide (MIO)

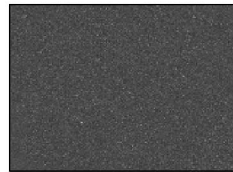
Alkyd-based coating pigmented with micaceous iron oxide. Being resistant to atmospheric pollution, high humidity and mild chemical fume attack, it gives protection to the interior and exterior of steelwork, typically in the mild marine and industrial environment. Exhibits a matt finish with a metallic lustre. It can be used as a finish topcoat on its own.



Silver



Dark Grey



Grey Black



Neptune Blue



Neon Green



Nippon Paint Protective Finish FD

Nippon Paint Protective Finish FD is a finish coating based on a combination of oil modified alkyd and a special synthetic resin. It has excellent weathering resistance and is recommended as finishing coat for steel structure and iron surfaces under non-immersion condition.



Flamingo 1402



Sun Flower 1505



Crystal Mint 1222



Paradise Blue 1365



Wira Blue 1471



Lavender Grey 1307



Slate 1325



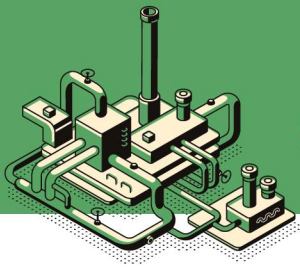
Papier Grey 1139



White 1145



Black 1144

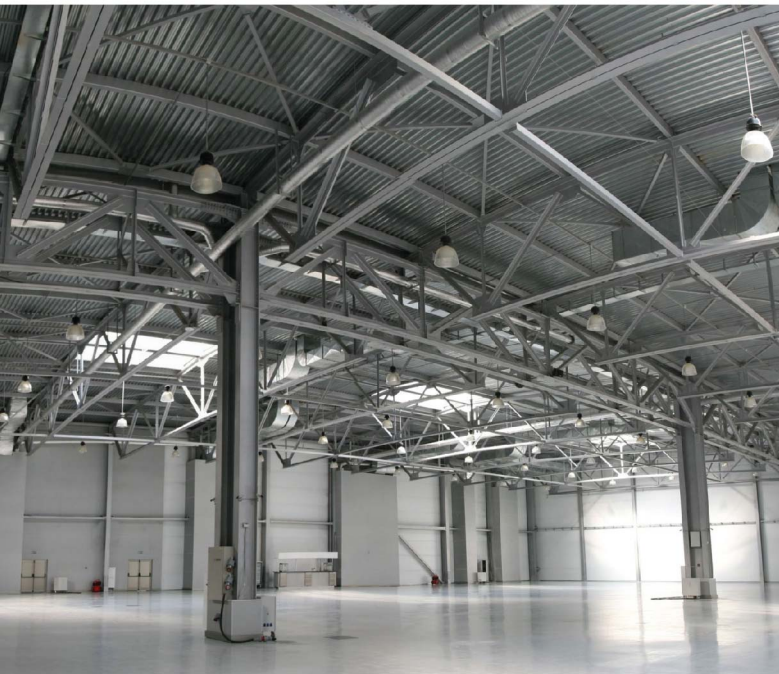
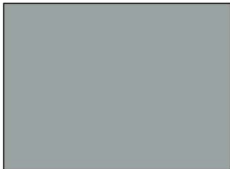


CONVENTIONAL COATINGS



Nippon Paint Aluminium Paint

Nippon Paint Aluminium Paint is a high-quality solvent-based paint. It can be used on all types of suitably primed interior and exterior metal surfaces.



Nippon Paint Bituminous Solution

Excellent wetting and water-resistant properties that provides an excellent finish for internal lining of water tanks.



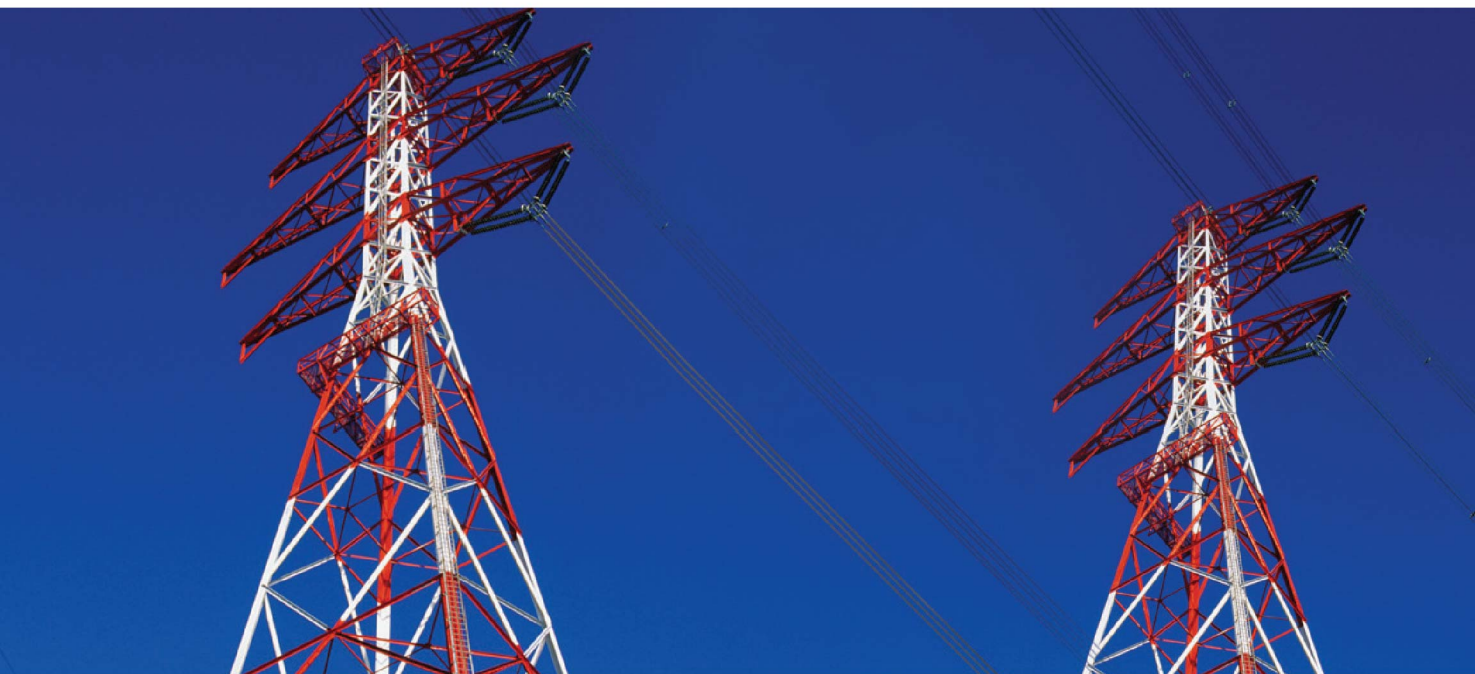
Black

Nippon Paint Protective Acrylic Red Oxide Primer

Single pack acrylic based primer for use on steel, galvanised steel and aluminium window frames. It provides fast drying properties with excellent chemical and corrosion resistances.



Red Oxide Primer



Nippon Paint Protective Acrylic Finish

Single-pack acrylic semi-gloss with good durability against exterior weathering. The detergent resistance and washable finish makes maintenance cleaning in high traffic area easy.



Tower Red

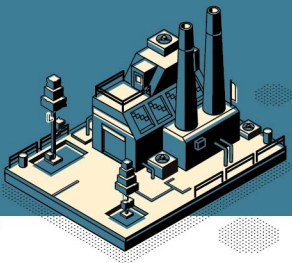
148**



White

145**

***Approved by The Civil Aviation Authority of Malaysia (Previously known as Department of Civil Aviation (DCA))*



HEAVY-DUTY COATINGS

Comprehensive two-pack protective coatings specially formulated to provide protection against corrosion for surface under service condition exposed to an environment of medium to high condensation and presence of corrosive chemicals.

Nippon Paint NIOZ

Inorganic Zinc Primer – A two-pack solvent based which can be applied on commercial abrasive blasted standard (SSPC-SP 10, Sa 2.5) base coating based on ethyl silicate and zinc dust. It prevents corrosion and provides excellent resistance to weathering, abrasion, impact, heat and many solvents, making it suitable for on commercial abrasive blasted standard (SSPC-SP 10, Sa 2.5) for severe corrosive services.

Nippon Paint Zinc Rich Primer HS Nippon Paint Nippe zinc E2 Primer

Organic Zinc Rich Primers – Two-pack epoxy zinc rich primers which can be applied in commercial abrasive blasted standard (SSPC-SP10, Sa 2.5) steel for cathodic protection. Ideal as touch-up primer and can be applied by brush or roller. (Use Nippon Paint Nippe zinc E2 Primer for long term protection at marine and heavy industrial areas.)

Nippon Paint Zinc Rich Primer HS



Nippon Paint Nippe zinc E2 Primer



Nippon Paint Etching Primer 120 Nippon Paint Galvaprimer

Nippon Paint Etching Primer 120 and Nippon Paint Galvaprimer are two-pack polyvinyl butyral-based, acid-catalysed etching primers. A must for galvanised steel and light alloys before application of other topcoats. It gives excellent adhesion to galvanised steel and light alloys which provides a suitable base for most of the coatings to adhere satisfactorily. (Use Nippon Paint Etching Primer 120 for lighter finishing colours. Use Nippon Paint Galvaprimer for darker finishing colours.)

Nippon Paint Etching Primer 120

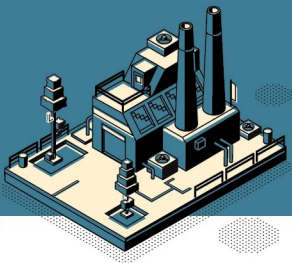


Nippon Paint Galvaprimer



Nippon Paint Penetrative Epoxy Primer

Two-pack amidoamine cured epoxy finish for use on concrete floor surfaces, which provide good adhesion to the substrate. Acid-treatment should be done prior to application. It is suitable for use as a tie coat between concrete substrate and solvent-based topcoat, such as Nippon Paint EA4 Finish and Nippon Paint EA7 Finish.



HEAVY-DUTY COATINGS

Internal Tank Epoxy Coatings

Nippon Paint EA9 Red Oxide Primer

A two-pack high-build amine adduct cured food grade epoxy primer. It can be overcoated with food grade epoxy finish, Nippon Paint EA9 Finish HB for coating of most of the edible storage tanks.



Nippon Paint EA9 Finish HB

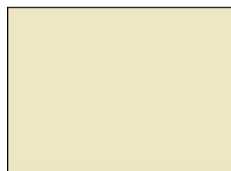
A two-pack high-build amine-adduct cured food grade epoxy finish. It is designed as an intermediate or finishing coat for the internal coating of edible storage tanks and interior primed steel. It can be painted directly on masonry, galvanized surfaces and non-ferrous metal i.e. aluminum and light alloys. It can also be recommended as a hard, thick barrier coat which can act as a finishing for storage tank.



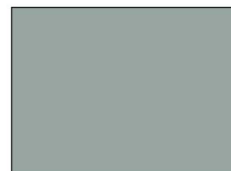
Executive Grey 0104



White BS 9102



Ivory BS 4052



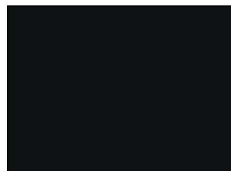
Misty Grey 1457



Ash Grey BS 9093



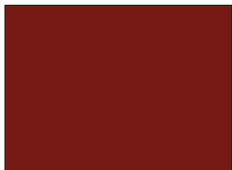
Calm Green BS 6070



Black BS 9103

Nippon Paint 9049 Nippon Paint 9049 GF*

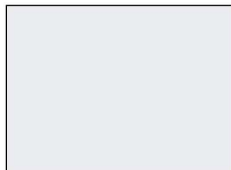
A two-packed epoxy cycloaliphatic amine coating that act as a high build primer and a self-priming finish with excellent corrosion resistance. (Nippon Paint 9049 GF* is reinforced with glass flakes.)



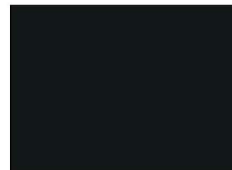
Reddish Brown*



RAL 7047



N7.0*



RAL 9005

*Colours available for Nippon Paint 9049 GF



Nippon Paint Arocoat

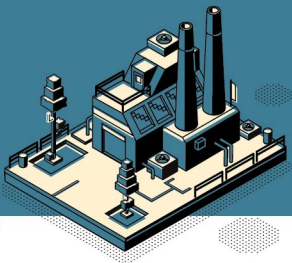
A two-pack high-build coal tar epoxy coating, which provides excellent protection against corrosive chemicals and resistance against salt and fresh water.



Brown



Black



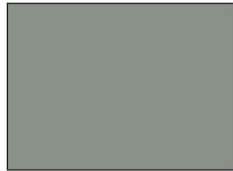
HEAVY-DUTY COATINGS

Nippon Paint 8048 Zinc Phosphate Primer QD

A two-pack high build surface/tolerant epoxy coating that combines superior barrier properties with excellent wetting, adhesive characteristics and low VOC.



Reddish



Pearl Grey

Nippon Paint 8048

Surface tolerant/mastic and low VOC, high performance advanced technology semi-gloss mastic. As a multi-purpose mastic with high volume of solids. It provides excellent corrosion protection and resistance against oil, solvents, chemicals, splashes and spillages.



Aluminium 1463



Straw Cream 1134



Marble Grey 0104



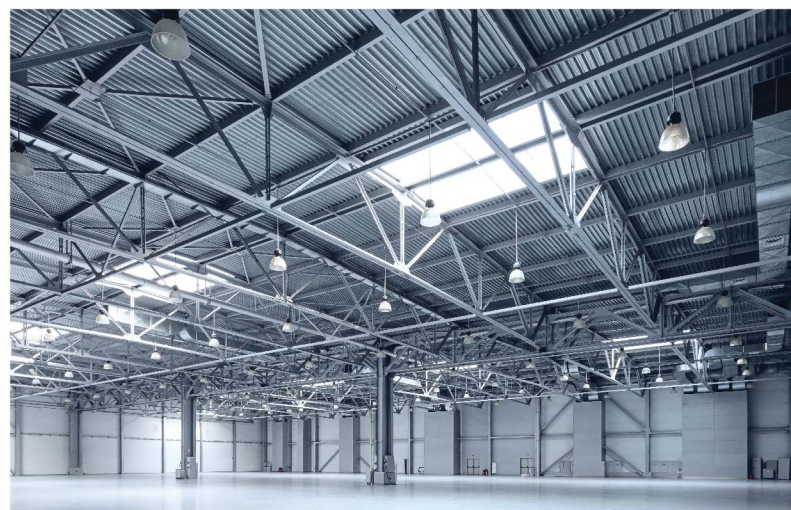
Indian Red 1462



Off White

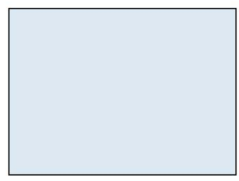


RAL 7035



Nippon Paint 8048 MIO

Two-pack epoxy polyamide coating pigmented with micaceous iron oxide that provides a high build impervious barrier which gives excellent adhesion and surface wetting properties. It has unique combination of anti-corrosion pigments, and rust penetrants giving it excellent corrosion resistance in virtually any environment.



Light Grey

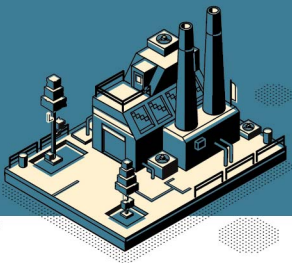


Silver



Dark Grey





HEAVY-DUTY COATINGS

Nippon Paint Epoxy Xpress Zinc Phosphate Primer

Polyamide cured epoxy coating with added zinc phosphate pigment. It is a fast-drying epoxy, which has superior adhesive properties with excellent corrosion resistance. It can be applied over wire brushed rusty steel where abrasive blasting is not possible.



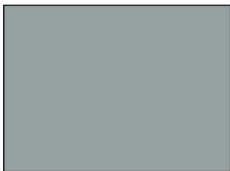
Nippon Paint Epoxy Xpress

Polyamide cured epoxy with fast drying properties and high build barrier coating that gives excellent adhesion and surface wetting properties on appropriate primed steelwork. The barrier coat acts as a mid coat to provides excellent corrosion resistance



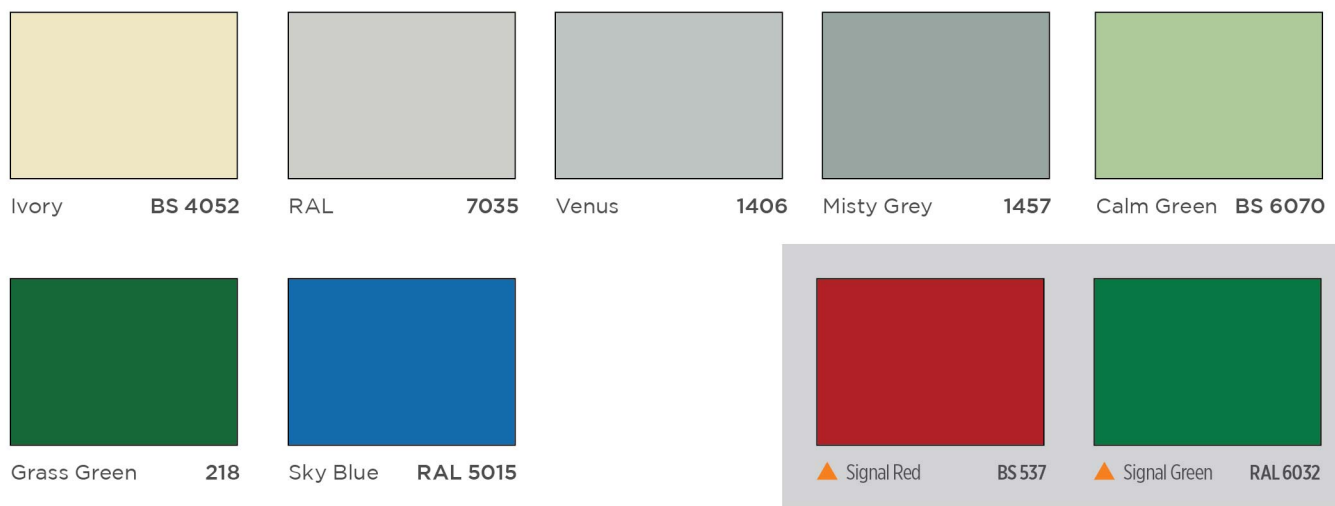
Nippon Paint Epoxy Xpress MIO

Polyamide cured coating pigmented with Micaceous Iron Oxide(MIO). Fast drying, high build barrier coating that gives excellent adhesion and surface wetting properties. The MIO further enhances the corrosion, mechanical and chemical resistance of the coating.



Nippon Paint Polyurethane Recoatable Finish

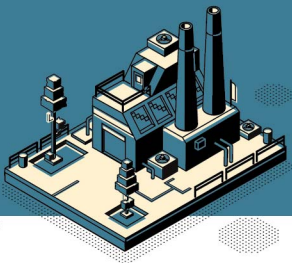
Two-pack aliphatic acrylic PU glossy finish for exterior and interior surfaces. This high-performance finish has excellent resistance to abrasion, scratches, impact, condensing humidity, staining and splashes of chemicals. Nippon Paint Polyurethane Recoatable Finish is ideal for heavy-duty industrial areas where protection of the surfaces are important.



Nippon Paint PUR Lite Finish

A two component PU coating for all your basic metal surfaces protection. This good performance glossy finishing provides good impact and chemical resistance. Nippon Paint PUR Lite Finish provides ideal protection for medium-duty areas.

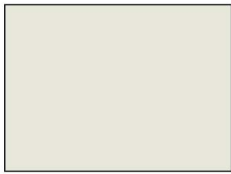
NOTE: Colour selection is the same as Nippon Paint Polyurethane Recoatable Finish



HEAVY-DUTY COATINGS

Nippon Paint EA4 Finish Nippon Paint EA4 Finish (EP)

Two-pack amine adduct cured epoxy finish with hard-wearing, chemical-resistant and excellent abrasion resistance for steel structures. The glossy and smooth finish is suitable for use in areas subjected to high level of abuse and aggressive chemicals with ease of maintenance and cleaning. Use Nippon EA4 Finish (EP) with EP Hardener when overcoat on Nippon Paint 8048 products.



Ash Grey BS 9093



Ivory BS 4052



Executive Grey 0104



Misty Grey 1457



Calm Green BS 6070



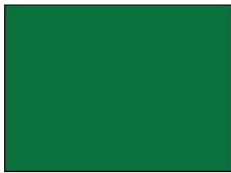
Evergreen 1461



Lime Green 1459



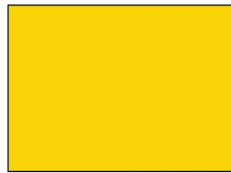
Fern Green 1460



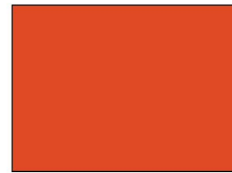
Dark Green 1458



Indian Red 0882*



Yellow 0668*



Orange 0823*



Blue 0139



Bright Blue 0632

BS9102 White and BS9103 Black are also available.

*Premium Colours

Nippon Paint EA7 Finish

A good performance two pack amine adduct cured epoxy coating that gives a glossy finishing appearance. This finishing makes it suitable for concrete substrates where abrasion resistance is required.



Ash Grey **BS 9093**



Misty Grey **1457**



Executive Grey **0104**



Evergreen **1461**



Dark Green **1458**



Golden Yellow **0455**



Signal Red **1411**



Neptune Blue **9331**

BS9102 White and BS9103 Black are also available.





HEAT RESISTANCE COATINGS



Protective coatings solution specially formulated to withstand high temperature environments, while providing corrosion protection to the steel surface.

Nippon Paint 300 High Temperature Primer **Nippon Paint 600 High Temperature Primer**

A special solvent based paint suitable for priming interior & exterior ferrous surfaces subjected to high heat. It is recommended to overcoat the primer with the respective finish. (Maximum operating temperature for each product as indicated in the product name.)



Primer

Nippon Paint 300 High Temperature Finish **Nippon Paint 600 High Temperature Finish**

A special solvent based paint for interior & exterior ferrous surfaces subjected to high heat. Contains aluminium paste which gives excellent corrosion resistance. Must be used with their respective primer. (Maximum operating temperature for each product as indicated in the product name.)



Aluminium

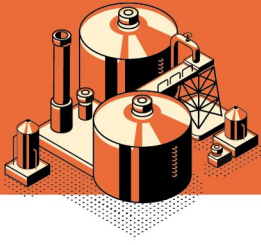


White*



Red*

**Available for Nippon Paint 300 High Temperature Finish only*



CHEMICAL RESISTANCE COATINGS



Protective coatings solutions that are specially formulated for severe chemical environments on steel and concrete including immersed services.

Nippon Paint CORCHEM PRIME

Two-component epoxy primer, which pigmented with zinc phosphate anti rust inhibitor. It is designed as anti-corrosion primer for vinyl ester system, on metal and concrete surfaces. It can be top-coated with most of the topcoat system, including acrylics, polyurethane and epoxy.

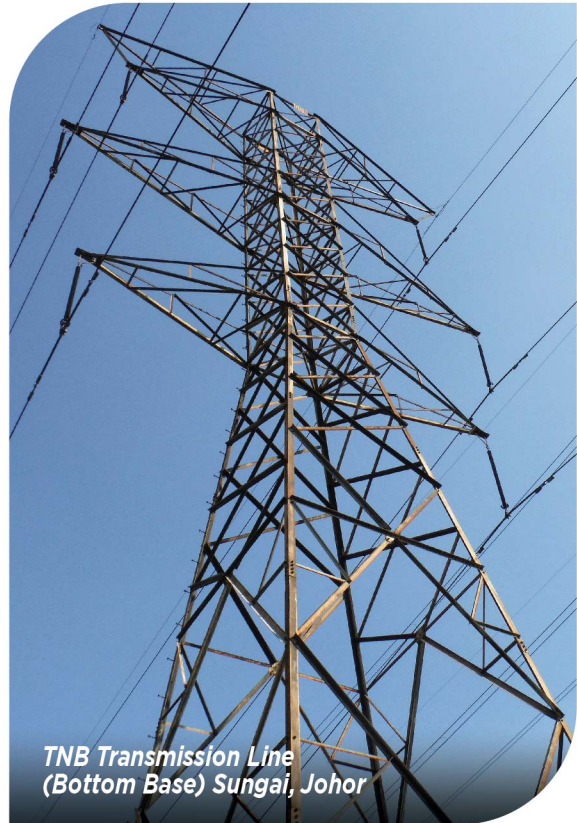
Nippon Paint CORCHEM VE

Build-up system based on vinyl ester resin, designed to fulfill requirement of high temperature, excellent corrosion and chemical resistance properties. Ideal for chemically stressed environment such as chemical tanks and wastewater treatment tank.



PROJECT REFERENCE

We are proud to be involved in the thousands of completed projects across Malaysia over the years. Here are some projects that used our coating solution to create their strong coat of reputation.





Manjung 4 Turbine Hall, Perak



Kapar Energy Ventures Power Plant, Selangor



Kuala Lumpur Convention Centre, Kuala Lumpur



Kimanis Power Plant, Sabah



KVMRT Sungai Buloh Depot, Selangor



Kellogg's Factory, Negeri Sembilan

COATING SYSTEM

COATING SYSTEM		PRODUCTS	PRODUCTS	RECOMMENDED SURFACE PREPARATION
NPM 1	Primer	Nippon Paint Zinc Phosphate Primer FD	Alkyd Zinc Phosphate	St 3 or SSPC-SP 3
	Intermediate	Nippon Paint Protective Finish FD	Alkyd Gloss Enamel	
	Finish	Nippon Paint Protective Finish FD	Alkyd Gloss Enamel	
NPM 2	Primer	Nippon Paint Zinc Phosphate Primer FD	Alkyd Zinc Phosphate	St 3 or SSPC-SP 3
	Intermediate	Nippon Paint Micaceous Iron Oxide (MIO)	Alkyd MIO	
	Finish	Nippon Paint Protective Finish FD	Alkyd Gloss Enamel	
NPM 3	Primer	Nippon Paint Zinc Phosphate Primer FD	Alkyd Zinc Phosphate	St 3 or SSPC-SP 3
	Intermediate	Nippon Paint Micaceous Iron Oxide (MIO)	Alkyd MIO	
	Finish	Nippon Paint Micaceous Iron Oxide (MIO)	Alkyd MIO	
NPM 4	Primer	Nippon Paint Zinc Phosphate Primer FD	Alkyd Zinc Phosphate	St 3 or SSPC-SP 3
	Intermediate/ Finish	Nippon Paint Aluminium Paint	Linseed/Phenolic Aluminium Paint	
NPM 5	Primer	Nippon Paint Etching Primer 120/ Nippon Paint Galvaprimer / Nippon Paint PVB Tech Primer	2-pack Polyvinyl-butyrac acid etching coat	SSPC-SP 1
	Finish	Nippon Paint Protective Finish FD	Alkyd Gloss Enamel	
NPM 6	Primer	Nippon Paint EA9 Finish HB	Amine Adduct Cured Epoxy	SSPC-SP 1
	Finish	Nippon Paint Polyurethane Recoatable Finish	2-pack Aliphatic PU Finish	
NPM 7	Primer	Nippon Paint Zinc Rich Primer HS	2-pack Epoxy (Organic) Zinc Coating	Sa 2.5 or SSPC-SP 10
	Intermediate	Nippon Paint 8048	2-pack Epoxy High Build/Epoxy Mastic	
	Finish	Nippon Paint Polyurethane Recoatable Finish	2-pack Aliphatic PU Finish	
NPM 8	Primer	Nippon Paint Zinc Rich Primer HS	2-pack Epoxy (Organic) Zinc Coating	Sa 2.5 or SSPC-SP 10
	Intermediate	Nippon Paint 8048	2-pack Epoxy High Build/Epoxy Mastic	
	Finish	Nippon Paint EA4 Finish (EP)	2-pack Amine adduct Cured Epoxy Finish	

RECOMMENDED DRY FILM THICKNESS IN MICRONS	TYPES OF SUBSTRATE												
	FOR NEW PAINTING SYSTEM	FOR REPAINTING SYSTEM	STEEL STRUCTURE - EXTERIOR	STEEL STRUCTURE - INTERIOR	GALVANISED STEELWORK (GI) - EXTERIOR	GALVANISED STEELWORK (GI) - INTERIOR	CERAMIC ROOF TILE / METAL ROOFING - EXTERIOR	CERAMIC ROOF TILE / METAL ROOFING - INTERIOR	INTERNAL TANK COATING	MASONRY - EXTERIOR	MASONRY - INTERIOR	CONCRETE FLOOR (INTERIOR)	STEELWORK (HIGH TEMPERATURE)
45													
40	•	•	•	•									
40													
45													
50	•	•	•	•									
45													
45	•	•	•	•									
50													
45													
2x35	•	•	•	•									
12	•				•	•							
2x40													
2x50													
50	•				•	•							
75													
125	•		•	•									
50													
75													
125	•			•									
50													

ADDITIONAL INFORMATION

Nippon Paint Zinc Phosphate Primer FD can be replaced by other conventional metal primers e.g Nippon Paint Red Oxide Primer.

For Nippon Paint Protective Finish FD colours, please refer to Nippon Paint 9000 Gloss Finish chart.

Nippon Paint Zinc Phosphate Primer FD can be replaced by other conventional metal primers e.g Nippon Paint Red Oxide Primer.

For Nippon Paint Protective Finish FD colours, please refer to Nippon Paint 9000 Gloss Finish chart.

Nippon Paint Zinc Phosphate Primer FD can be replaced by other conventional metal primers e.g Nippon Paint Red Oxide Primer.

Nippon Paint Zinc Phosphate Primer FD can be replaced by other conventional metal primers e.g Nippon Paint Red Oxide Primer.

For normal service environment, Nippon Paint Etching Primer 120 or Nippon Paint PVB Tech Primer can also be used.

Recommended for corrosive service environment.

Nippon Paint Zinc Rich Primer HS can be replaced by Nippon Paint Nippe zinc E2 Primer (Organic Zinc Coating) and Nippon Paint NIOZ (Inorganic Zinc Coating).

Nippon Paint Zinc Rich Primer HS can be replaced by Nippon Paint Nippe zinc E2 Primer (Organic Zinc Coating) and Nippon Paint NIOZ (Inorganic Zinc Coating).

Epoxy Finish is not recommended for exterior exposure service condition due to its natural tendency to chalk under sunlight (UV).

COATING SYSTEM

COATING SYSTEM	PRODUCTS		PRODUCTS	RECOMMENDED SURFACE PREPARATION
NPM 9	Primer	Nippon Paint 8048 Zinc Phosphate Primer QD	2-pack Epoxy Zinc Phosphate	Sa 2.5 or SSPC-SP 10/St3
	Intermediate	Nippon Paint 8048/8048 MIO	2-pack High Build Epoxy/ Epoxy MIO Mastic	
	Finish	Nippon Paint Polyurethane Recoatable Finish	2-pack Aliphatic PU Finish	
NPM 10	Primer	Nippon Paint 8048 Zinc Phosphate Primer QD	2-pack Epoxy Zinc Phosphate	Sa 2.5 or SSPC-SP 10/St3
	Intermediate	Nippon Paint 8048/8048 MIO	2-pack High Build Epoxy/ Epoxy MIO Mastic	
	Finish	Nippon Paint EA4 Finish (EP)	2-pack Amine Adduct Cured Epoxy Finish	
NPM 11	Primer	Nippon Paint 8048	2-pack surface tolerant epoxy mastic	Sa 2.5 or SSPC-SP 10/St3
	Intermediate	Nippon Paint 8048/8048 MIO	2-pack High Build Epoxy/ Epoxy MIO Mastic	
	Finish	Nippon Paint Polyurethane Recoatable Finish	2-pack aliphatic PU Finish	
NPM 12	Primer	Nippon Paint 8048	2-pack surface tolerant epoxy mastic	Sa 2.5 or SSPC-SP 10/St3
	Intermediate	Nippon Paint 8048/8048 MIO	2-pack High Build Epoxy/ Epoxy MIO Mastic	
	Finish	Nippon Paint EA4 Finish (EP)	2-pack amine adduct cured epoxy finish	
NPM 13	Primer	Nippon Paint EA9 Finish HB	Amine adduct cured epoxy	Sa 2.5 or SSPC-SP 10
	Intermediate	Nippon Paint EA9 Finish HB	Amine adduct cured epoxy	
	Finish	Nippon Paint Polyurethane Recoatable Finish	2-pack aliphatic PU finish	
NPM 14	Primer	Nippon Paint EA9 Finish HB	Amine adduct cured epoxy	SSPC SP-1
	Intermediate	Nippon Paint EA9 Finish HB	Amine adduct cured epoxy	
	Finish	Nippon Paint Protective Acrylic Finish	Single pack solvent based acrylic finish	
NPM 15	Primer	Nippon Paint Arocoat	Coal tar epoxy	Dust free for masonry. For steel Sa 2, Sa 1, St 3 or SSPC-SP 3
	Finish	Nippon Paint Arocoat	Coal tar epoxy	
NPM 16	Primer	Nippon Paint EA9 Red Oxide Primer	Amine adduct cured epoxy primer	Sa 2.5 or SSPC-SP 10
	Intermediate	Nippon Paint EA9 Finish HB	Amine adduct cured epoxy finish for tank coating	
	Finish	Nippon Paint EA9 Finish HB	Amine adduct cured epoxy finish for tank coating	

RECOMMENDED DRY FILM THICKNESS IN MICRONS	TYPES OF SUBSTRATE												
	FOR NEW PAINTING SYSTEM	FOR REPAINTING SYSTEM	STEEL STRUCTURE - EXTERIOR	STEEL STRUCTURE - INTERIOR	GALVANISED STEELWORK (GI) - EXTERIOR	GALVANISED STEELWORK (GI) - INTERIOR	CERAMIC ROOF TILE / METAL ROOFING - EXTERIOR	CERAMIC ROOF TILE / METAL ROOFING - INTERIOR	INTERNAL TANK COATING	MASONRY - EXTERIOR	MASONRY - INTERIOR	CONCRETE FLOOR (INTERIOR)	STEELWORK (HIGH TEMPERATURE)
100													
100	•	•	•	•	•	•							
50													
100													
100	•	•		•		•							
50													
100													
100	•	•	•	•	•	•							
50													
100													
100	•	•		•		•							
50													
50													
75	•	•			•	•	•	•		•	•		
50													
50													
75	•	•				•		•			•		
50													
150	•	•								•			
150													
60	•			•		•							
120													
120													

ADDITIONAL INFORMATION

Nippon Paint 8048 Zinc Phosphate Primer QD can be replaced by Nippon Paint 8048-1462 Indian Red.

Nippon Paint 8048 Zinc Phosphate Primer QD can be replaced by Nippon Paint 8048-1462 Indian Red.

Epoxy Finish is not recommended for exterior exposure service condition due to its natural tendency to chalk under sunlight (UV).

For primer coat, Nippon Paint 8048-1462 Indian Red colour is recommended.

For primer coat, Nippon Paint 8048-1462 Indian Red colour is recommended.

Epoxy Finish is not recommended for exterior exposure service condition due to its natural tendency to chalk under sunlight (UV).

This system can be used for Galvanised Steelworks (GI) - Exterior & Interior with surface preparation SSPC-SP1 (Solvent Cleaning).

For repainting system on steel structure and metal roofing, wirebrush to St3, touch up primer Nippon 8048-1462 Red Indian of 60 microns dry film thickness is recommended.

For repainting system on masonry surfaces, the old coating system must be a 2-pack chemical cured coating material.

Recommended on sheet pile. Can be used on steel substrate which are buried or shaded where low budget and long term protection are required. Also used in waste treatment plant for tank lining.

For more chemical resistance information, please refer to Nippon Paint (M) Sdn Bhd, Technical Sales Dept, Protective Coating Division.

COATING SYSTEM

COATING SYSTEM	PRODUCTS		PRODUCTS	RECOMMENDED SURFACE PREPARATION
NPM 17	Primer	Nippon Paint Penetrative Epoxy Primer	Amidoamine Cured Epoxy Finish	For new concrete floor, etch with 5% HCL acid, flush with fresh water and let dry.
	Intermediate	Nippon Paint EA4 Finish	Amine adduct cured epoxy finish for floor	
	Finish	Nippon Paint EA4 Finish	Amine adduct cured epoxy finish for floor	For old concrete floor, flush with fresh water and let dry.
NPM 18	Primer	Nippon Paint 300 High Temperature Primer	Heat resistance silicone acrylic based primer	Sa 2.5 or SSPC-SP 10/St3
	Finish	Nippon Paint 300 High Temperature Finish	Heat resistance silicone acrylic finish	
NPM 19	Primer	Nippon Paint 600 High Temperature Primer	Heat resistance silicone based primer	Sa 2.5 or SSPC-SP 10/St3
	Finish	Nippon Paint 600 High Temperature Finish	Heat resistance silicone finish	
NPM 20	Finish	Nippon Paint Protective Acrylic Finish	Acrylic	SSPC-SP 1
NPM 21	Primer	Nippon Paint 9049/9049 GF	2-pack High Build Epoxy Mastic	Sa 2.5 or SSPC-SP 10 /St3
	Intermediate	Nippon Paint 9049/9049 GF	2-pack High Build Epoxy Mastic	
	Finish	Nippon Paint 9049/9049 GF	2-pack High Build Epoxy Mastic	
NPM 22	Primer	Nippon Paint 9049/9049 GF	2-pack High Build Epoxy Mastic	Sa 2.5 or SSPC-SP 10/St3
	Intermediate	Nippon Paint 9049/9049 GF	2-pack High Build Epoxy Mastic	
	Finish	Nippon Paint Polyurethane Recoatable Finish	2-pack Aliphatic PU Finish	

FOR MORE TOTAL COATING & CONSTRUCTION SOLUTIONS
BY NIPPON PAINT, VISIT **PROFESSIONAL.NIPPONPAINT.COM.MY**



NIPPON PAINT (M) SDN. BHD. (196701000578)
Lot I-17, Taman Perindustrian Subang Utama, Jalan SU 4, 40300 Shah Alam, Selangor Darul Ehsan, Malaysia.
☎ 1-800-88-2663 ✉ customercare@nipponpaint.com.my 📘 facebook.com/nipponpaintmalaysia
🏠 nipponpaint.com.my | professional.nipponpaint.com.my