



**NIPPON
PAINT**

THE COATINGS EXPERT

COAT FOR EXCELLENCE

**CORPORATE
PROFILE**

**ASIA'S NO.1
PAINT BRAND**

WWW.PROFESSIONAL.NIPPONPAINT.COM.MY

ARCHITECTURAL | PROTECTIVE | INDUSTRIAL | MARINE | AUTOMOTIVE | WATERPROOFING



We believe in challenging the norm to better serve all our customers and the industry. It is our culture to strive for perfection in all our endeavors as a **TOTAL COATING SOLUTIONS PROVIDER.**

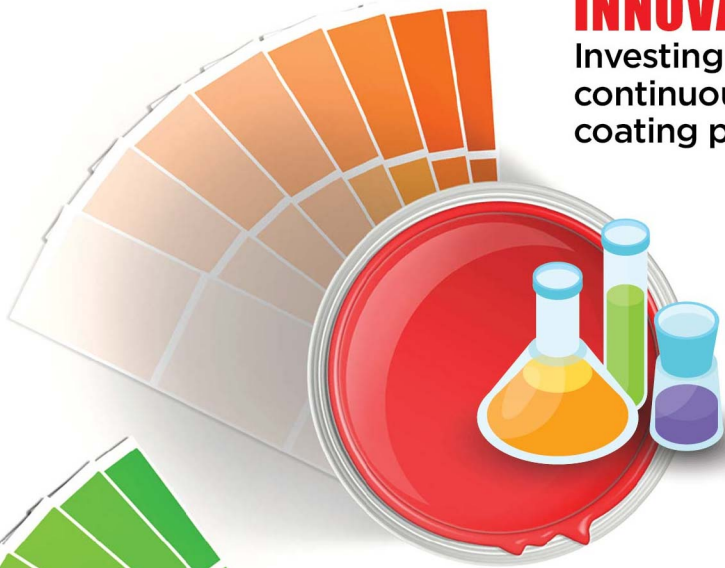
Established in 1967, Nippon Paint Malaysia Group is part of Nippon Paint Group, Asia's No. 1 coating manufacturer spanning 15 countries and regions, built on a heritage of 130 years dating back to 1881 in Japan. We are recognized as Malaysia's No. 1 Total Coating Solutions provider since 2008, with strong regional presence in Asian countries.

The secret to our success is a strong emphasis on product innovation, which has led us to become a global leader in coating technologies offering Total Coating Solutions with a multi-segment, multi-substrate and multi-industry portfolio.

Our Business Foundation

INNOVATION

Investing in technology with continuous innovation in paint, coating products and services.



SERVICE

Providing effective and cost efficient solutions to customers and investing resources to meet the needs of the communities.



GROWTH

Focus on growing and driving a healthy business with strong profitability for the long-term.



LEADERSHIP

Asia's No. 1 in the paint and coatings industry of choice in Architectural and Industrial Segments leading innovation for your business needs.



Facts & Figures



AWARDS & RECOGNITION

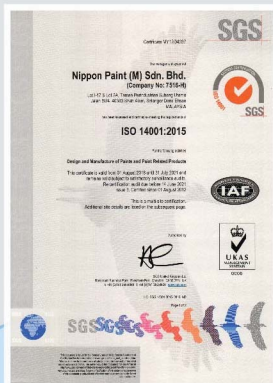
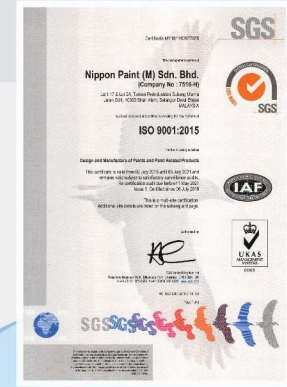


International Standard Compliance

We put quality at the front of their innovation - all raw materials, formulation and operation are subjected to the most stringent test.

ISO 9001: Quality Management

International standard that specifies requirements for a quality management system (QMS). Organizations use the standard to demonstrate the ability to consistently provide products and services that meet customer and regulatory requirements.



ISO 14001: Environmental

International standard that specifies requirements for an effective environmental management system (EMS). It provides a framework that an organization can follow, rather than establishing environmental performance requirements.



SIRIM MS Standards

Majority of our products are compliance with the SIRIM MS Standards below;
 MS903 : Latex Emulsion Paint for interior Use
 MS134 : Latex Emulsion Paint for Exterior & Interior Use
 MS125 : Gloss Enamel Paint
 MS289 : Aluminium Finish Paint
 MS164 : Road Marking Paints



SIRIM ECO-Label

Majority of our products are compliance with the SIRIM ECO label making our product to be green in the Malaysia market.

Singapore Green Label
 Majority of our products are compliance with the Singapore Green Label making our product to be green in the international level.



ISO 12944: Best practices in corrosion protection of structural steel.

We have coating systems that are all compliance with the ISO 12944 best practices.





THE COATING



**ARCHITECTURAL
COATING**

07-08

**PROTECTIVE
COATING**

09-10



EXPERT

Nippon Paint Malaysia, positioned as “The Coating Expert”, signifies Nippon Paint’s unshakeable role as the provider of Total Coating Solutions that meets diverse industry needs by creating coatings for every surface.



**FLOORING
SOLUTION**

11-12



**WATERPROOFING
SOLUTION**

13-14



ARCHITECTURAL COATING

The key segment in Nippon Paint, with more than 50 years of experience in introducing specialty solutions for all architectural coatings, from exterior, interior, wood and metal even to special function coatings.

Exterior Coating Series

Our Weatherbond series provides at least 7 years of protection against harsh weather. Additionally, our Weatherbond Solareflect comes with Sunblock technology. On the other hand, our Dura Series provides breathable surfaces or elastomeric crack bridging technologies catering to your preferences.

Interior Coating Series

We have myriad of interior paint products for different kind of needs, for example, our Momento Series that offers luxurious and elegant special effect paint to beautify your interior space.

Anti-Microbial Coating Series

With Health and Wellness focus in mind, we have developed a range of products that has anti-viral and anti-bacterial properties, providing a safe and clean indoor space.

Wood Coating Series

Wood is one of the most common materials use in building construction. As such, we have developed the Hydro Series, water-based wood paint (pigmented and varnish) that helps enhance the appearance of wood at the same time provides the protection that it deserves.

Special Function Coating

With the rising needs of different functions of coating, we have developed our Anti-Stick range paint to curb illegal stickers on public amenities, Tile Primer that allows coating on tiles, and many more.

Textured Coating Series

Alternatively to the costly stone or marble materials, our textured coatings provide the appearance and feeling of these materials on surfaces to make your buildings unique amongst a sea of solid colours.



1	2
3	4
5	

1. Hard Rock Hotel, Penang
2. Perdana Emerald Condominium, Selangor
3. Senja Club House, Selangor
4. Edén on the Park, Kuching
5. The Starling, Damansara Uptown



PROTECTIVE COATING

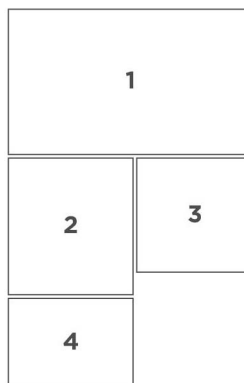
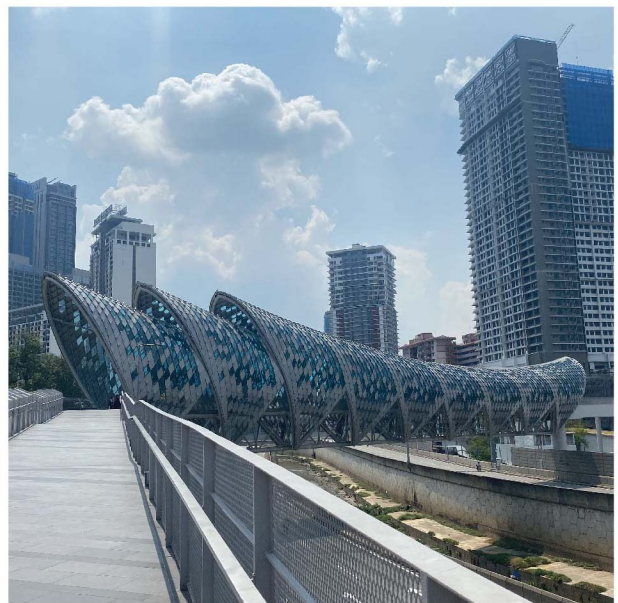
Nippon Paint's Protective Coating segments aim to protect surfaces that are highly prone to corrosion, rust and the detrimental effects of the environment with the specially formulated anti-corrosion solution. Our protective coating is ideal for any metal surfaces, structural steel works, storage tanks (for edible products, fuel, oil, water and etc.), pipes, piles, vessels and metal bridges.

Conventional Protective Coatings

One-component easy-to-use conventional protective coating that comprises the Alkyd Primer - Zinc Phosphate Primer, and Alkyd Finish - Nippon Micaceous Ion Oxide.

Heavy-Duty Protective Coatings

Two-Component, heavy duty coatings that includes epoxy zinc primer, internal tank epoxy coating, immersed epoxy coating, universal surface tolerant epoxy primer and UV-Resistant Top Coat Finishing.



1. 1M4U Youth Centre, Selangor
2. Bangunan Jakim, Putrajaya
3. Saloma Bridge, Kuala Lumpur
4. Elmina Bridge, Selangor



FLOORING SOLUTION

Nippon Paint's Flooring cut across all industry, providing seamless flooring for commercial, heavy-duty traffic protection for industrial flooring to beautification of carpark flooring. Our flooring solution comprises of synthetic resin and cementitious systems that are specifically designed to meet different flooring requirements.

FloorShield

A series of products comprise of Solvent-based or Solvent-Free resins - epoxy and polyurethane, that allows flexible flooring system customization that is ideal for all industrial flooring requirement.

DeckGuard

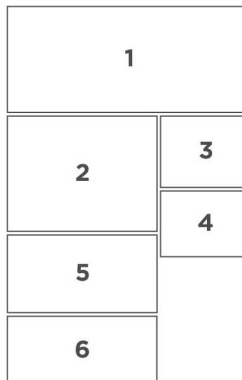
A complete multi-layered carpark flooring system that not just aim to protect your concrete floor, but uses colours to elevate the aesthetic of your carpark, giving your project a great first impression.

FloorSport

Be it exterior sports court or high-end club house sports facilities, our FloorSport coating - acclaimed by the International Tennis Federation is the right solution for you.

Floor Hardener & Densifier

For customers that are only looking at hardening or densifying the floor slab. Our natural aggregate and metallic aggregate floor hardener and lithium silicate densifier would be the solution for you.



1. PJKITA, Selangor
2. I-Santorini, Penang
3. KL Trillion, Kuala Lumpur
4. Gaban Spice Manufacturing, Penang
5. Hong Leong Yamaha, Kuala Lumpur
6. Volkswagen 3S Centre, Alor Setar

WATERPROOFING SOLUTION

Backed with the knowledge and technology of our counterpart in China – with a long-standing presence in the waterproofing industry, we have developed systems of products ranging from Liquid Applied, Cementitious and Sheet type waterproofing membrane. Our myriad selection of products offers waterproofing solutions for sub structures and super structures.

LM Series

Our range of liquid coating type membrane with different polymers – polyurea, polyaspartic, polyurethane, acrylic, and bitumen, building up a seamless elastomeric membrane for any waterproofing needs.

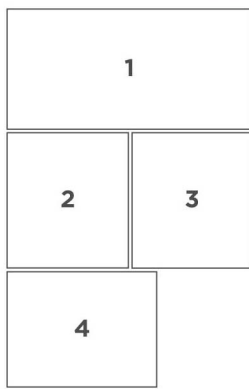
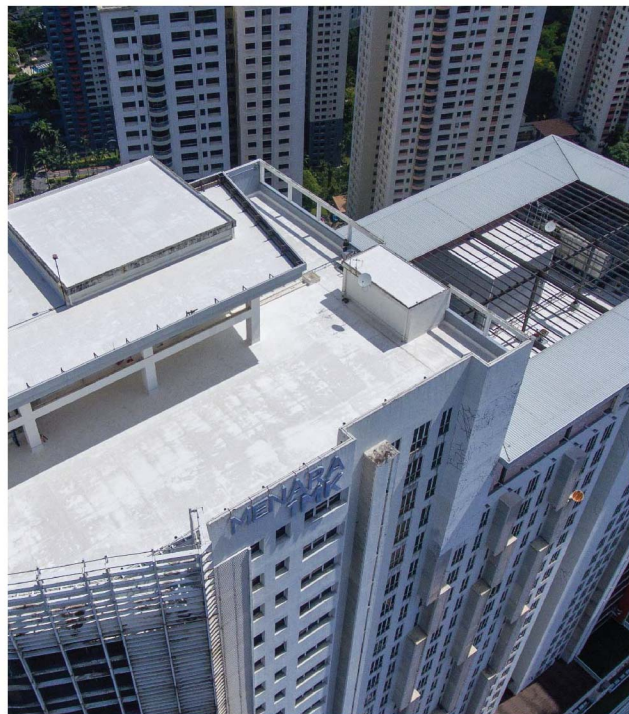
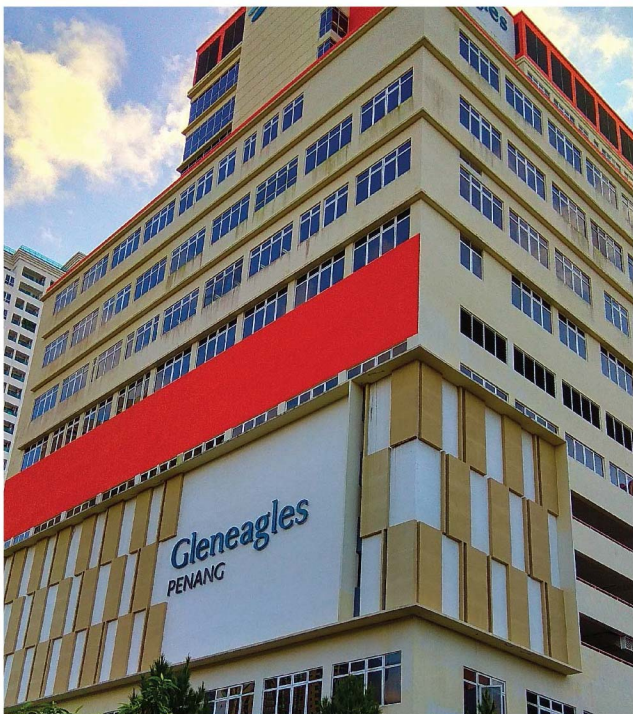
CM Series

SPAN certified, polymer-modified cementitious type waterproofing membrane for any wet area waterproofing needs.

SM Series

A wide range of roll-on sheet membrane waterproofing, encompasses torch on bitumen membrane, PVC and Thermal Polyolefin material for all for sub structures and super structures waterproofing.





- 1. Amber Court, Pahang
- 2. Gleneagles Hospital, Penang
- 3. Menara 1MK, Kuala Lumpur
- 4. Institut Latihan DBKL, Kuala Lumpur

FOR MORE TOTAL COATING SOLUTIONS BY NIPPON PAINT, VISIT
WWW.PROFESSIONAL.NIPPONPAINT.COM.MY



NIPPON PAINT (M) SDN. BHD. (196701000578)

Lot 1-17, Taman Perindustrian Subang Utama, Jalan SU 4,
40300 Shah Alam, Selangor Darul Ehsan, Malaysia.

☎ 1-800-88-2663 ✉ customercare@nipponpaint.com.my

🏠 www.nipponpaint.com.my | professional.nipponpaint.com.my